

PCB 板示意图 板厚1.0mm

NOTES:

\*Material

Body and sheath:LCP+50%G.F UL94V-0 Color:Black  
 Insert(molding):LCP+30%G.F UL94V-0 Color:Black  
 Contact:C5191:  
 Plating:Gold Plating over Nickel(40~80u")  
 on contact area,tin(100~250u")  
 Plating on Solder Tail.

Shell:Brass:  
 Plating:Nickle(40~80u")Plating.

\*Mechanical

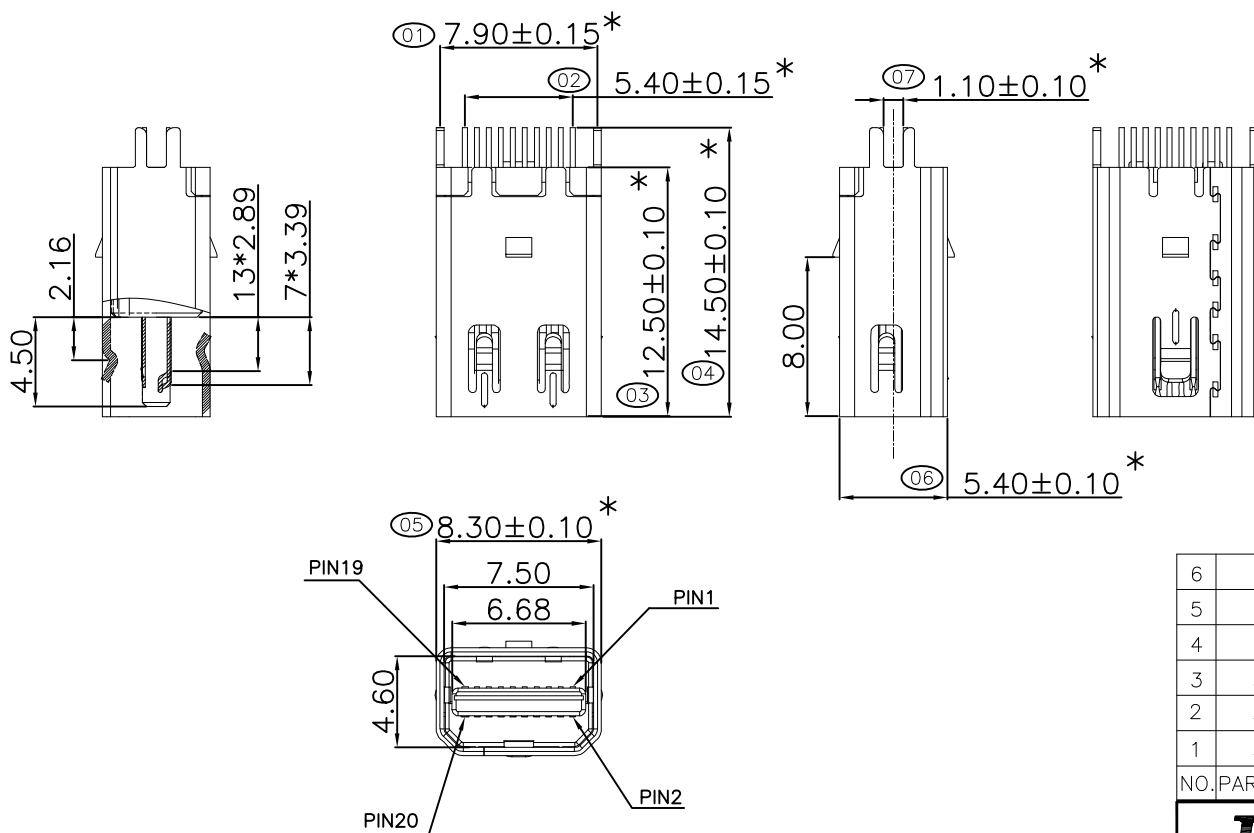
Insertion Force:4.5Kg Max  
 Withdrawal Force:1.0~4.0Kg Min  
 Durability:10000 Cycles

\*Electrical Specification

Current Rating:0.5 Ampere per contact  
 Contact Resistance:30MΩ Max  
 Insulation Resistance:100MΩ Min  
 Dielectric Withstanding Voltage:500V AC Min

\*Environmental

Operating Temperature:-40°C to +85°C



6			
5			
4			
3	外壳	BRASS	100u" NICKEL PLATED OVERALL, 80u" Cu UNDERPLATED OVERALL
2	端子	C2680	端子镀金30u"
1	胶芯	LCP	BLACK UL94V-0
NO.	PART NAME	MATERIAL	DESCRIPTION

**HE** 东莞市旭明电子有限公司

TITLE:	MINI DP 母座夹板1.0			
PART NO.	DPJ0007-001	CUSTOMER NO(REV)	1G	UNIT:mm
FILE NAME	150930-10	SHEET: 1 of 1	SCALE: 1:1	A4

					0	±0.25	DESIGN		
					0.0	±0.20			
0	15'09/30	NEW	Chi	Captain	0.00	±0.15	CHECK		
REV	DATE	DESCRIPTION	NAME	APPRO.	GENERAL TOLERANCE UNLESS OTHERWISE NOTED		APPRO.		